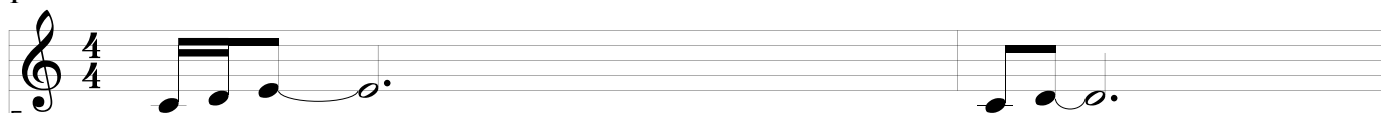
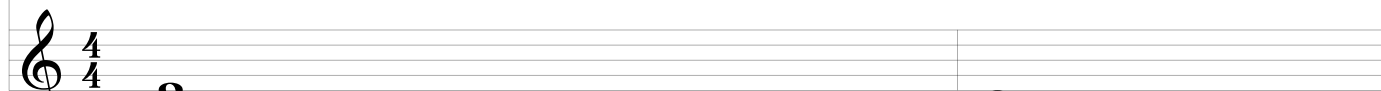


Erazim 3 (královna)

1



5:
ERAZIM
3.věta

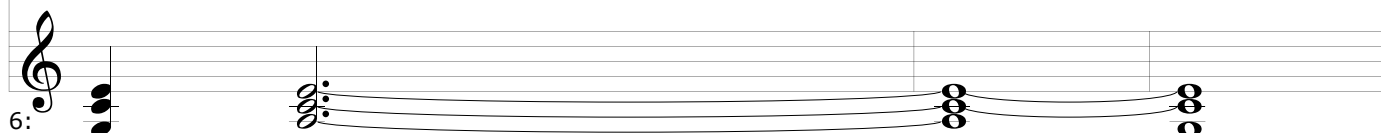


6:
ERAZIM
3.věta

3

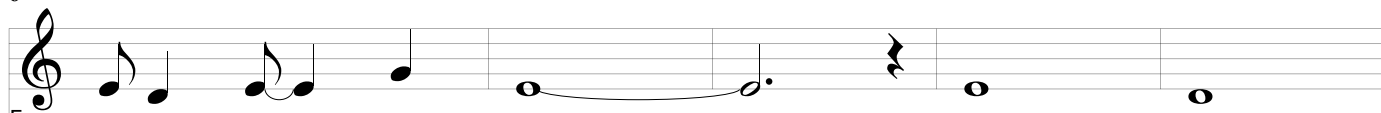


5:
ERAŽ
3.věť

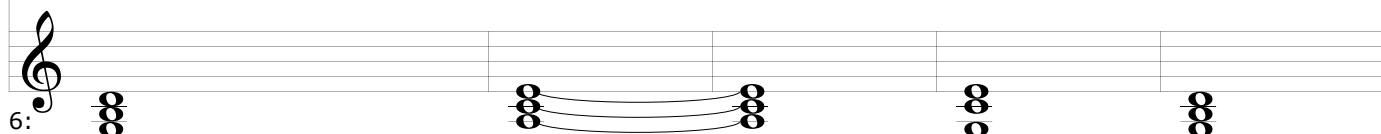


6:
ERAŽ
3.věť

6



5:
ERAŽ
3.věť

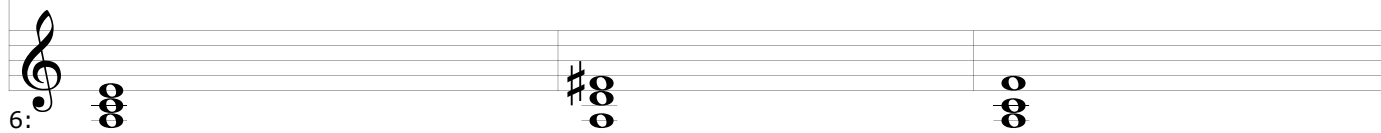


6:
ERAŽ
3.věť

11



5:
ERAŽ
3.věť



6:
ERAŽ
3.věť

14

5:
ERAŽ
3.vět

6:
ERAŽ
3.vět

Detailed description: The image shows a musical score for two staves. The top staff is in treble clef and contains a melody of eighth and quarter notes. The bottom staff is in treble clef and contains a bass line of chords. The piece is in 3/4 time and ends with a double bar line. The notation includes a treble clef, a key signature of one sharp (F#), and a 3/4 time signature. The melody in the top staff consists of the following notes: G4 (quarter), A4 (quarter), B4 (quarter), C5 (quarter), B4 (quarter), A4 (quarter), G4 (quarter), F#4 (quarter), E4 (quarter), D4 (quarter). The bass line in the bottom staff consists of the following chords: G4 (quarter), A4 (quarter), B4 (quarter), C5 (quarter), B4 (quarter), A4 (quarter), G4 (quarter), F#4 (quarter), E4 (quarter), D4 (quarter). The piece ends with a double bar line.