

Erazim

1

51: Chor

9

51: Chor

17

51: Chor

25

51: Chor

33

51: Chor

41

51: Chor

49

51: Chor

57

51: Chor

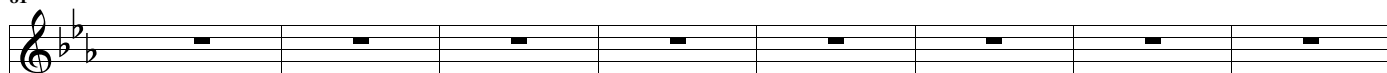
65

51: Chor

73

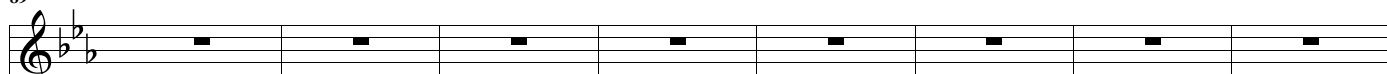
51: Chor

81



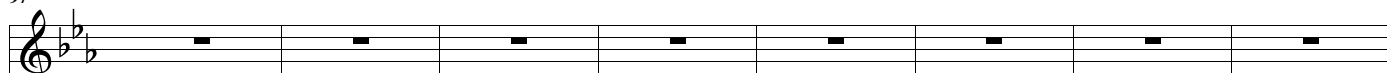
51: Chor

89



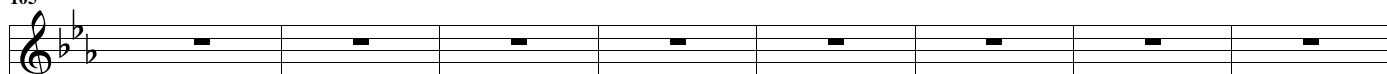
51: Chor

97



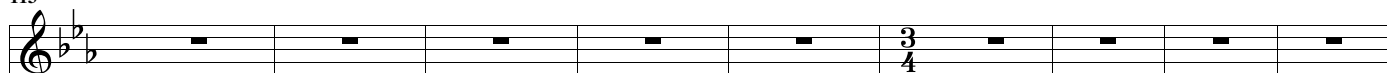
51: Chor

105



51: Chor

113



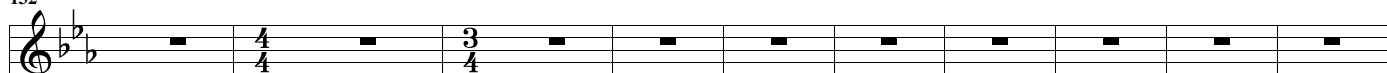
51: Chor

122



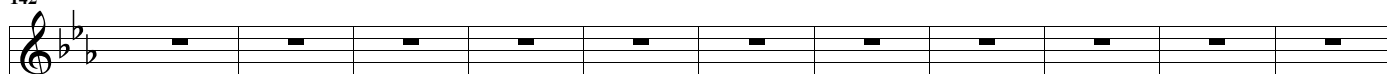
51: Chor

132



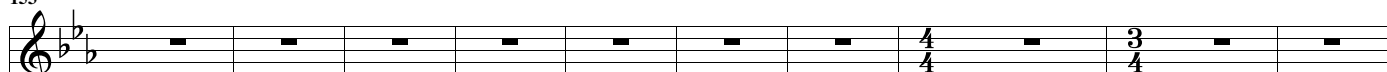
51: Chor

142



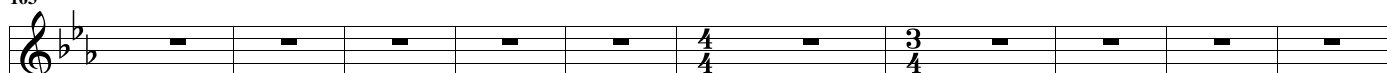
51: Chor

153



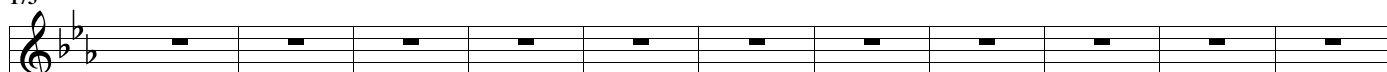
51: Chor

163



51: Chor

173



51: Chor

184

51: Chor

195

51: Chor

204

51: Chor

215

51: Chor

226

51: Chor

235

51: Chor

243

51: Chor

251

51: Chor

259

51: Chor

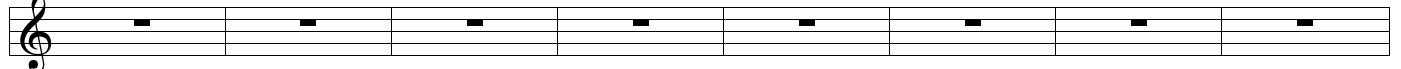
267

51: Chor

275

51: Chor

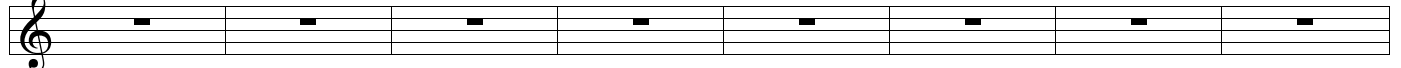
283



51:
Chor

A musical staff with a treble clef and a key signature of one flat. The staff is divided into eight measures, each containing a single eighth rest. Below the staff, the text "51: Chor" is written.

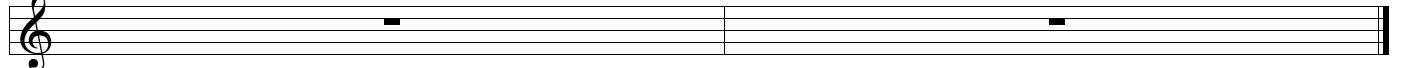
291



51:
Chor

A musical staff with a treble clef and a key signature of one flat. The staff is divided into eight measures, each containing a single eighth rest. Below the staff, the text "51: Chor" is written.

299



51:
Chor

A musical staff with a treble clef and a key signature of one flat. The staff is divided into two measures, each containing a single eighth rest. Below the staff, the text "51: Chor" is written.