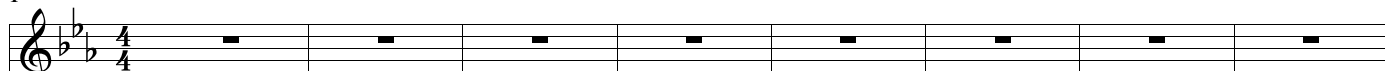


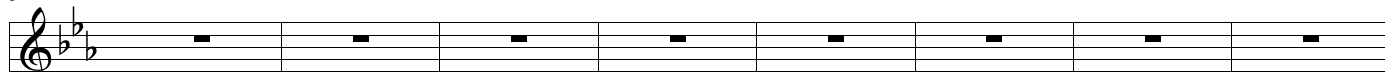
Erazim

1



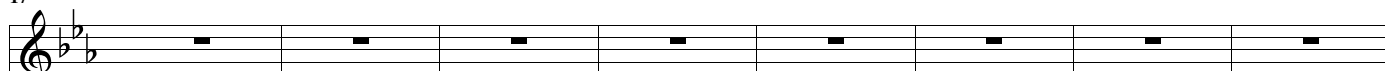
48: 2. hlas

9



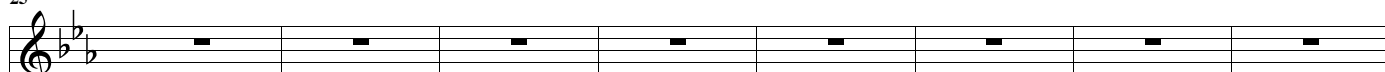
48: 2. hlas

17



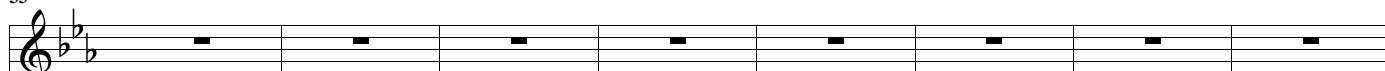
48: 2. hlas

25



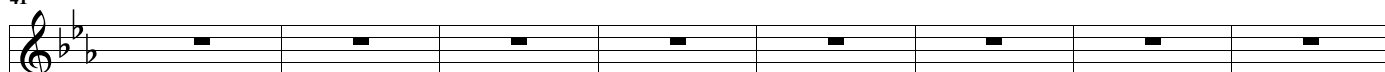
48: 2. hlas

33



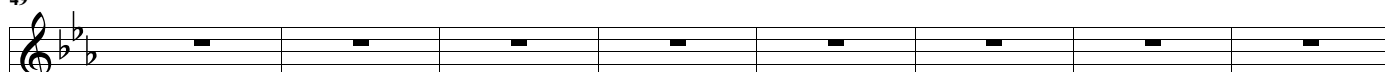
48: 2. hlas

41



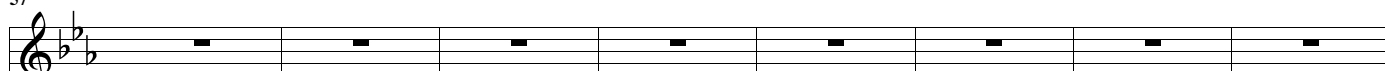
48: 2. hlas

49



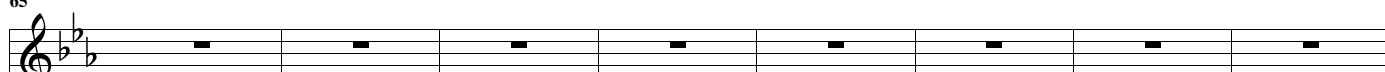
48: 2. hlas

57



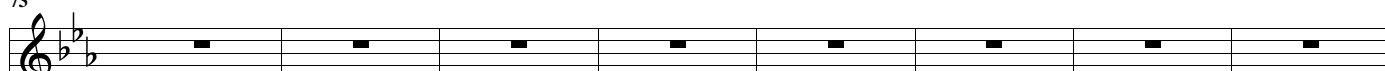
48: 2. hlas

65



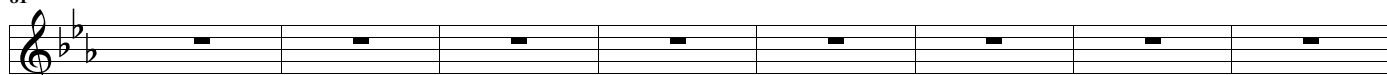
48: 2. hlas

73



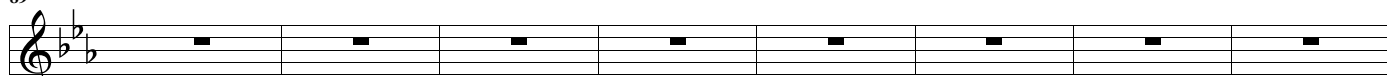
48: 2. hlas

81



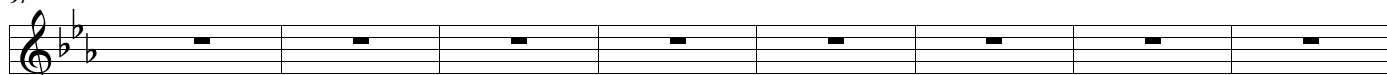
48: 2. hlas

89



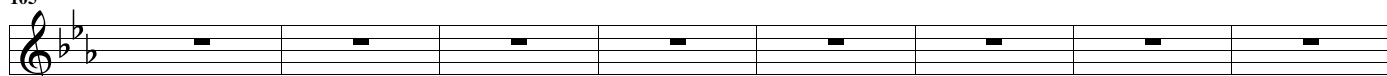
48: 2. hlas

97



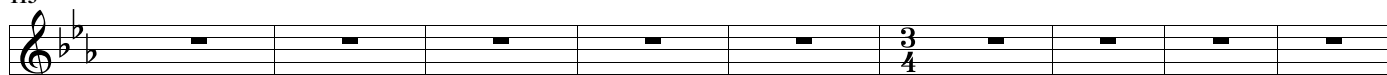
48: 2. hlas

105



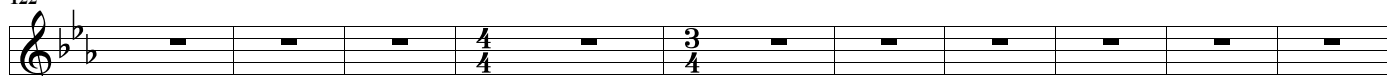
48: 2. hlas

113



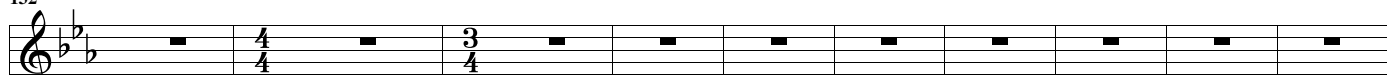
48: 2. hlas

122



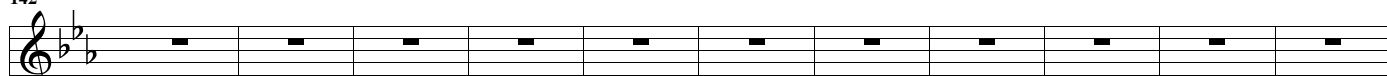
48: 2. hlas

132



48: 2. hlas

142



48: 2. hlas

153



48: 2. hlas

160



48: 2. hlas

165



48: 2. hlas

170
48: 2. hlas

Musical staff for measure 170, featuring a treble clef, a key signature of two flats (B-flat and E-flat), and a 4/4 time signature. The staff contains a sequence of eighth and quarter notes, including a quarter rest.

178
48: 2. hlas

Musical staff for measure 178, featuring a treble clef, a key signature of two flats, and a 4/4 time signature. The staff contains a sequence of eighth and quarter notes.

186
48: 2. hlas

Musical staff for measure 186, featuring a treble clef, a key signature of two flats, and a 4/4 time signature. The staff contains a sequence of eighth and quarter notes, followed by a half note.

194
48: 2. hlas

Musical staff for measure 194, featuring a treble clef, a key signature of two flats, and a 4/4 time signature. The staff contains a sequence of eighth and quarter notes, with a 4/4 time signature change indicated in the middle.

199
48: 2. hlas

Musical staff for measure 199, featuring a treble clef, a key signature of two flats, and a 4/4 time signature. The staff contains a sequence of eighth and quarter notes, with a 4/4 time signature change indicated in the middle.

204
48: 2. hlas

Musical staff for measure 204, featuring a treble clef, a key signature of two flats, and a 3/4 time signature. The staff contains a sequence of eighth and quarter notes, with a 3/4 time signature change indicated in the middle.

211
48: 2. hlas

Musical staff for measure 211, featuring a treble clef, a key signature of two flats, and a 4/4 time signature. The staff contains a sequence of eighth and quarter notes.

220
48: 2. hlas

Musical staff for measure 220, featuring a treble clef, a key signature of two flats, and a 4/4 time signature. The staff contains a sequence of eighth and quarter notes, followed by a half note.

230
48: 2. hlas

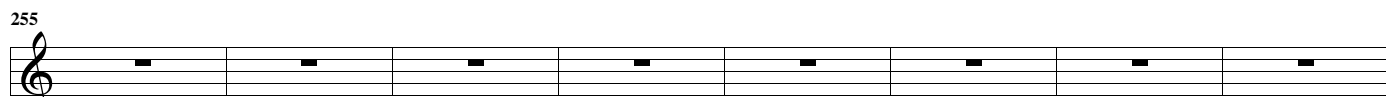
Musical staff for measure 230, featuring a treble clef, a key signature of two flats, and a 4/4 time signature. The staff contains a sequence of rests, with a 3/4 time signature change indicated in the middle.

239
48: 2. hlas

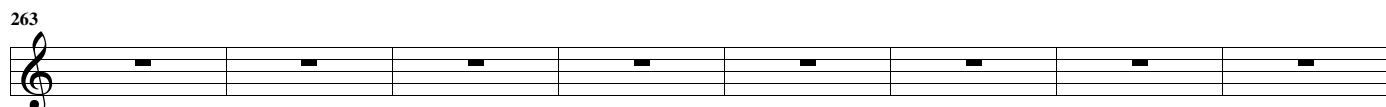
Musical staff for measure 239, featuring a treble clef, a key signature of two flats, and a 4/4 time signature. The staff contains a sequence of rests.

247
48: 2. hlas

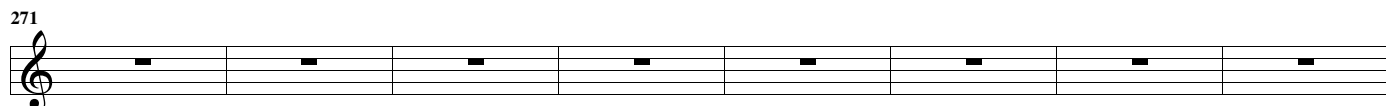
Musical staff for measure 247, featuring a treble clef, a key signature of two flats, and a 4/4 time signature. The staff contains a sequence of rests, followed by a double bar line and a final chord.



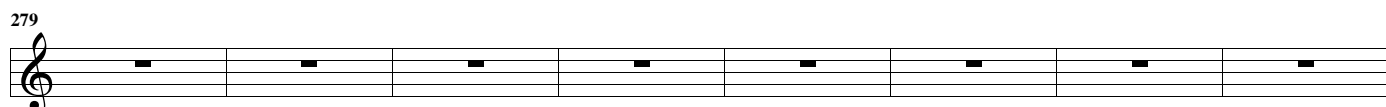
48:
2.
hlas



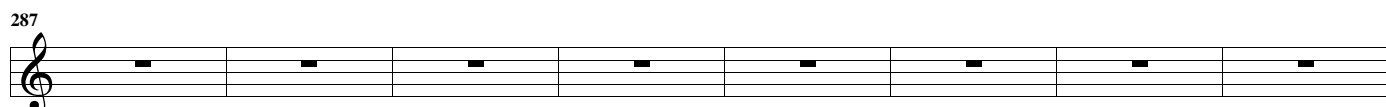
48:
2.
hlas



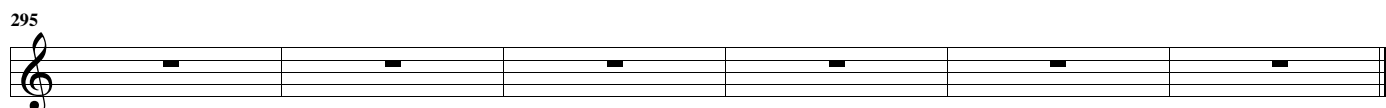
48:
2.
hlas



48:
2.
hlas



48:
2.
hlas



48:
2.
hlas