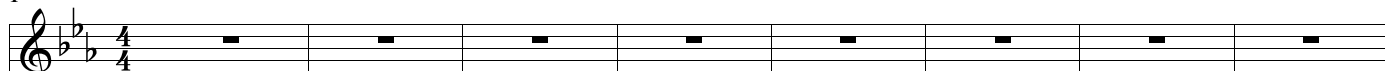


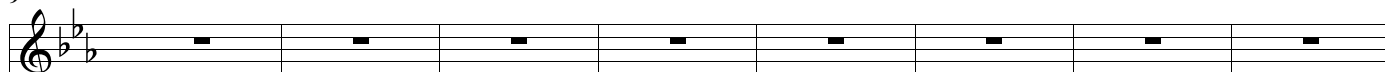
Erazim

1



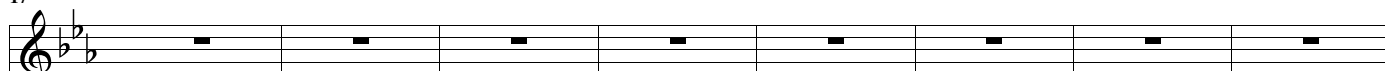
50: 1. hlas

9



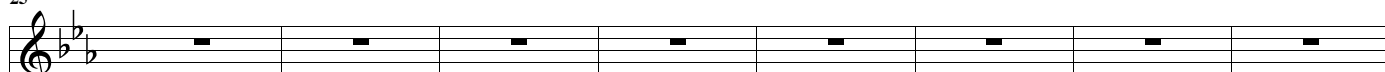
50: 1. hlas

17



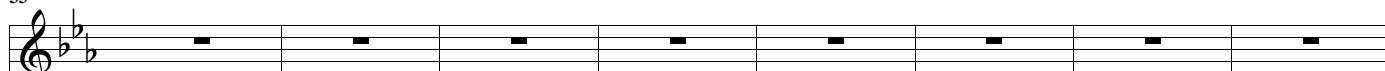
50: 1. hlas

25



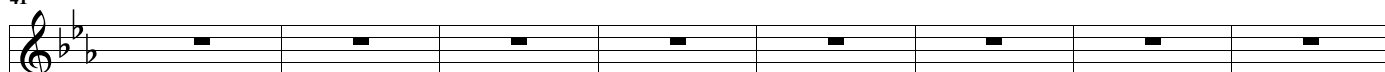
50: 1. hlas

33



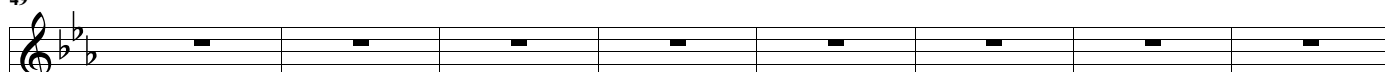
50: 1. hlas

41



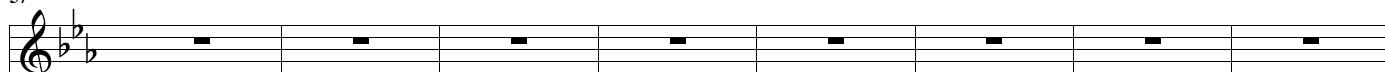
50: 1. hlas

49



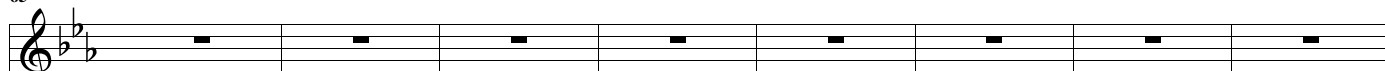
50: 1. hlas

57



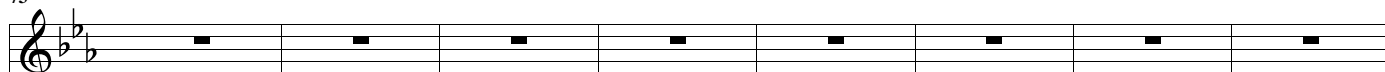
50: 1. hlas

65



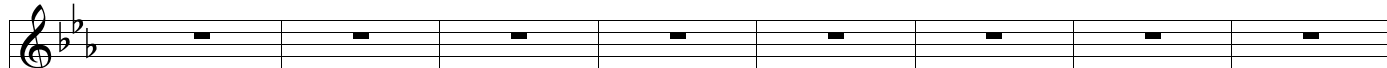
50: 1. hlas

73



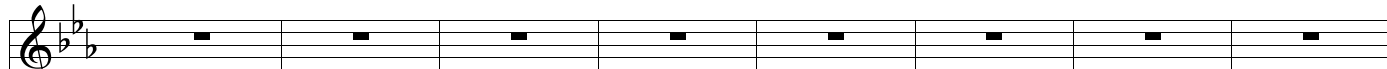
50: 1. hlas

81



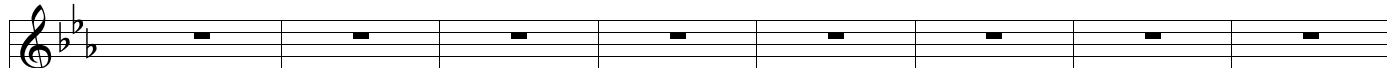
50: 1. hlas

89



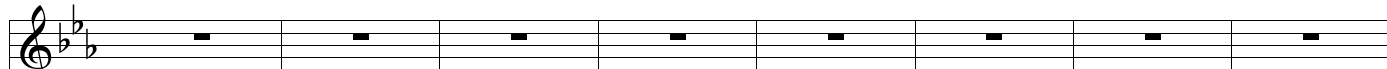
50: 1. hlas

97



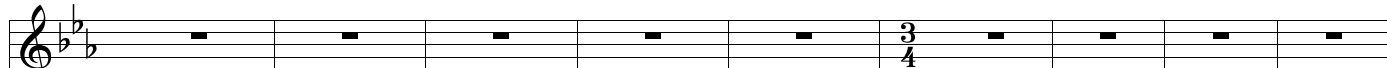
50: 1. hlas

105



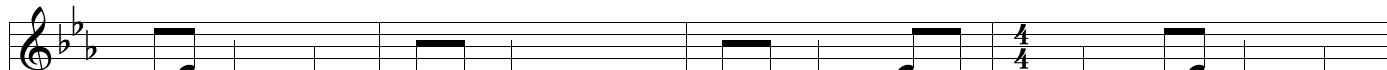
50: 1. hlas

113



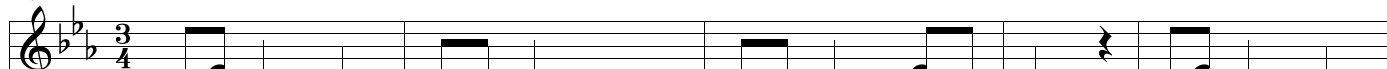
50: 1. hlas

122



50: 1. hlas

126



50: 1. hlas

131



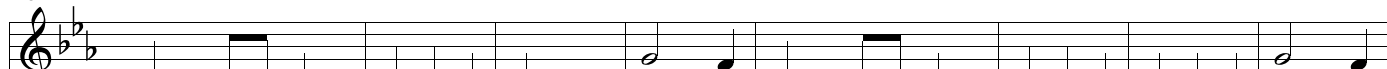
50: 1. hlas

135



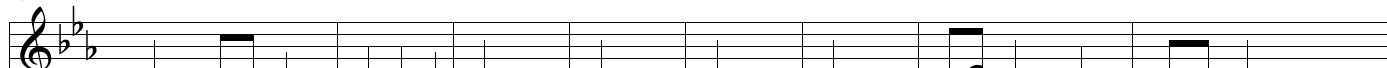
50: 1. hlas

143



50: 1. hlas

151



50: 1. hlas

159
50: 1. hlas

Musical notation for measure 159, featuring a treble clef, a key signature of two flats (B-flat and E-flat), and a common time signature. The melody consists of eighth and quarter notes, with a change in time signature to 4/4 and then 3/4 within the measure.

163
50: 1. hlas

Musical notation for measure 163, featuring a treble clef, a key signature of two flats, and a common time signature. The melody consists of eighth and quarter notes.

168
50: 1. hlas

Musical notation for measure 168, featuring a treble clef, a key signature of two flats, and a common time signature. The melody consists of eighth and quarter notes, with a change in time signature to 4/4 and then 3/4.

174
50: 1. hlas

Musical notation for measure 174, featuring a treble clef, a key signature of two flats, and a common time signature. The melody consists of eighth and quarter notes.

182
50: 1. hlas

Musical notation for measure 182, featuring a treble clef, a key signature of two flats, and a common time signature. The melody consists of eighth and quarter notes, ending with a long note.

191
50: 1. hlas

Musical notation for measure 191, featuring a treble clef, a key signature of two flats, and a common time signature. The melody consists of eighth and quarter notes, with a change in time signature to 4/4.

196
50: 1. hlas

Musical notation for measure 196, featuring a treble clef, a key signature of two flats, and a common time signature. The melody consists of eighth and quarter notes, with a change in time signature to 3/4.

201
50: 1. hlas

Musical notation for measure 201, featuring a treble clef, a key signature of two flats, and a common time signature. The melody consists of eighth and quarter notes, with changes in time signature to 4/4 and then 3/4.

205
50: 1. hlas

Musical notation for measure 205, featuring a treble clef, a key signature of two flats, and a common time signature. The melody consists of eighth and quarter notes, with a change in time signature to 3/4.

213
50: 1. hlas

Musical notation for measure 213, featuring a treble clef, a key signature of two flats, and a common time signature. The melody consists of eighth and quarter notes.

221
50: 1. hlas

Musical notation for measure 221, featuring a treble clef, a key signature of two flats, and a common time signature. The melody consists of eighth and quarter notes, ending with a long note.


229



50: 1. hlas

Musical staff for measure 229, featuring a treble clef, a key signature of two flats (B-flat and E-flat), and a 4/4 time signature. The staff contains a sequence of eighth and quarter notes, with a 3/4 time signature change indicated above the staff.

233



50: 1. hlas

Musical staff for measure 233, featuring a treble clef, a key signature of two flats, and a 4/4 time signature. The staff contains a sequence of eighth and quarter notes.

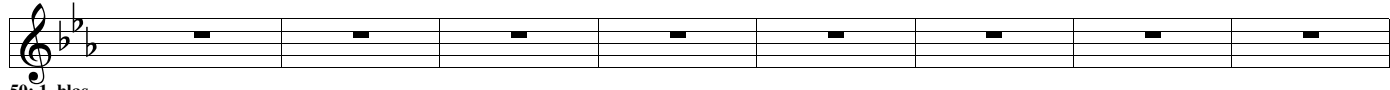
238



50: 1. hlas

Musical staff for measure 238, featuring a treble clef, a key signature of two flats, and a 4/4 time signature. The staff contains a sequence of eighth and quarter notes.

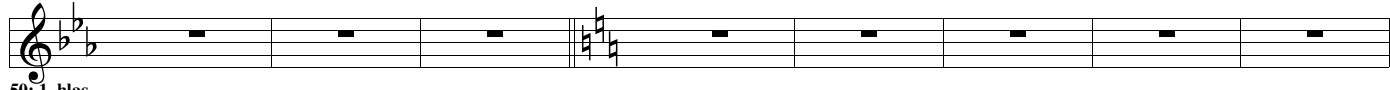
242



50: 1. hlas

Musical staff for measure 242, featuring a treble clef, a key signature of two flats, and a 4/4 time signature. The staff contains a sequence of whole rests.

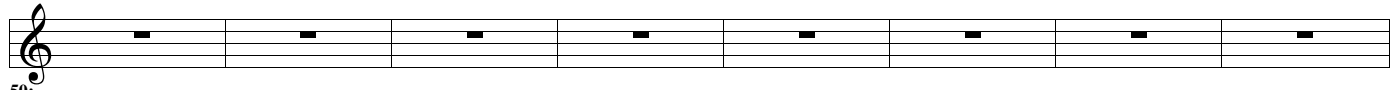
250



50: 1. hlas

Musical staff for measure 250, featuring a treble clef, a key signature of two flats, and a 4/4 time signature. The staff contains a sequence of whole rests, followed by a double bar line and a key signature change to one flat (B-flat).

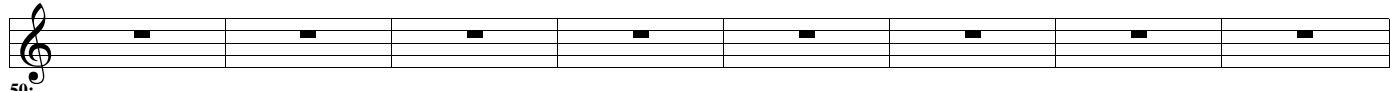
258



50:
1.
hlas

Musical staff for measure 258, featuring a treble clef, a key signature of one flat, and a 4/4 time signature. The staff contains a sequence of whole rests.

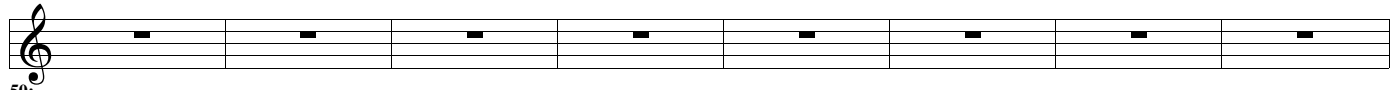
266



50:
1.
hlas

Musical staff for measure 266, featuring a treble clef, a key signature of one flat, and a 4/4 time signature. The staff contains a sequence of whole rests.

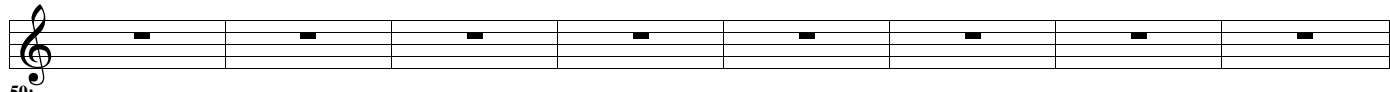
274



50:
1.
hlas

Musical staff for measure 274, featuring a treble clef, a key signature of one flat, and a 4/4 time signature. The staff contains a sequence of whole rests.

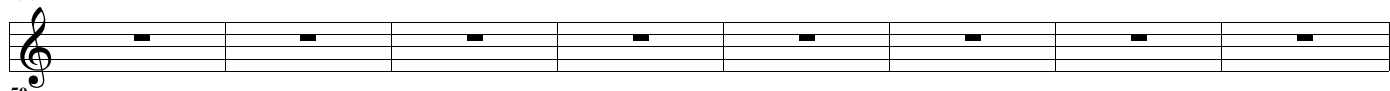
282



50:
1.
hlas

Musical staff for measure 282, featuring a treble clef, a key signature of one flat, and a 4/4 time signature. The staff contains a sequence of whole rests.

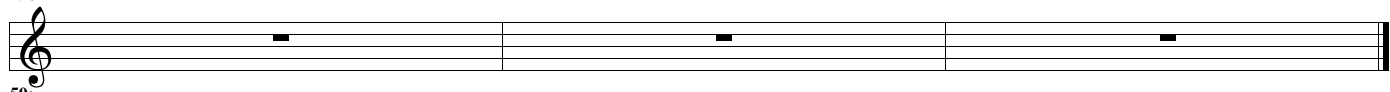
290



50:
1.
hlas

Musical staff for measure 290, featuring a treble clef, a key signature of one flat, and a 4/4 time signature. The staff contains a sequence of whole rests.

298



50:
1.
hlas

Musical staff for measure 298, featuring a treble clef, a key signature of one flat, and a 4/4 time signature. The staff contains a sequence of whole rests, ending with a double bar line.